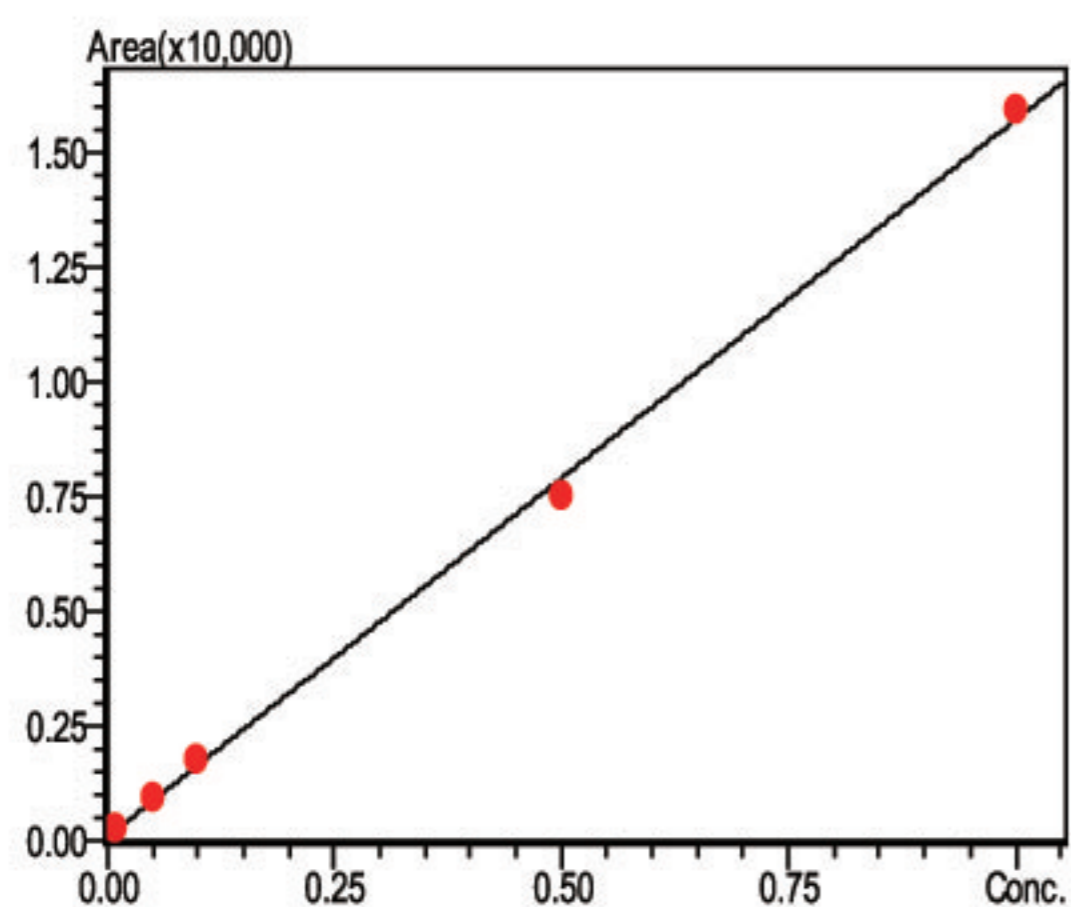




## ■ 谱图和校准曲线



$$Y = 15617.1X + 84.48368$$

$$R^2 = 0.9985999$$

$$R = 0.9992997$$

图3 沙蚕毒素标准曲线

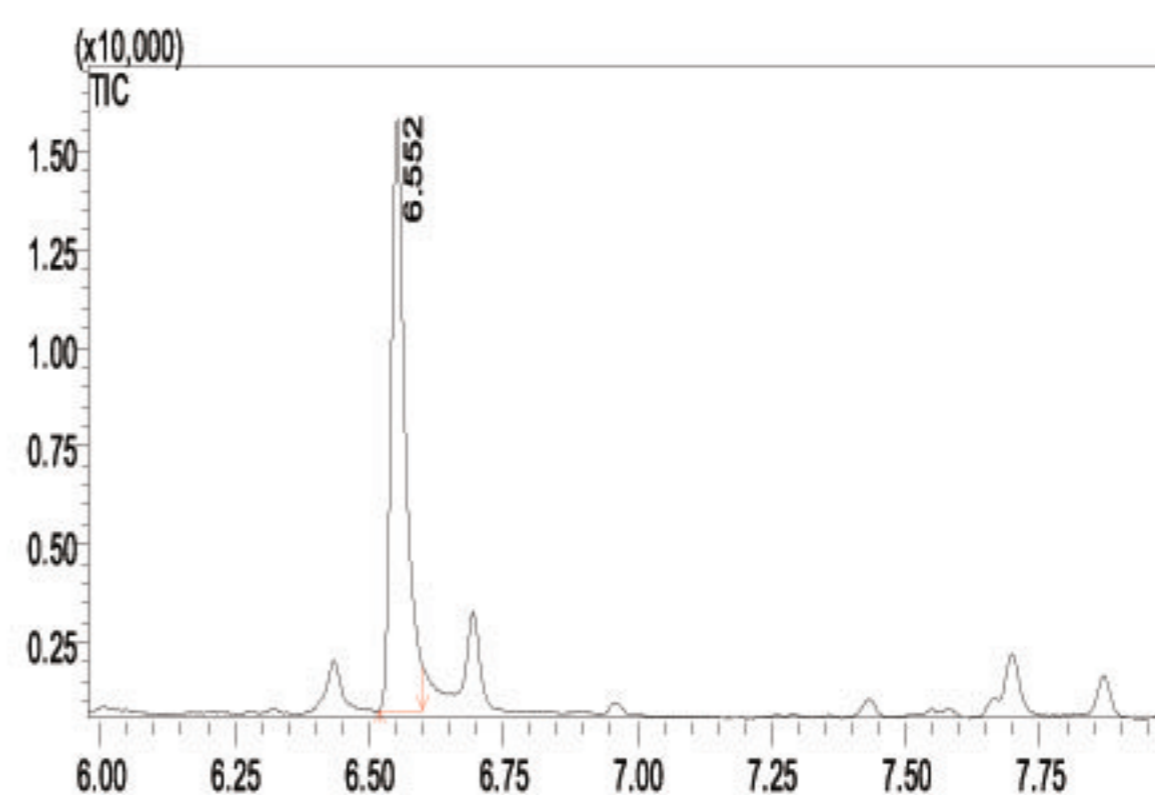


图4 沙蚕毒素的总离子流图

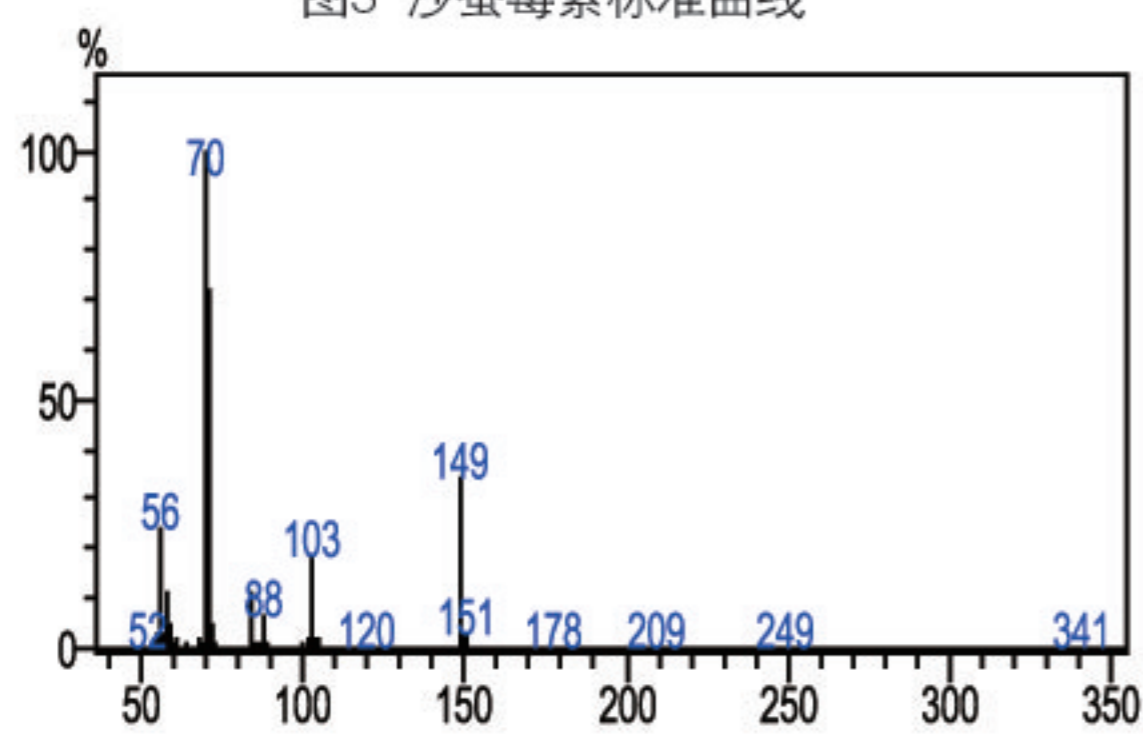


图5 沙蚕毒素质谱图 (scan)

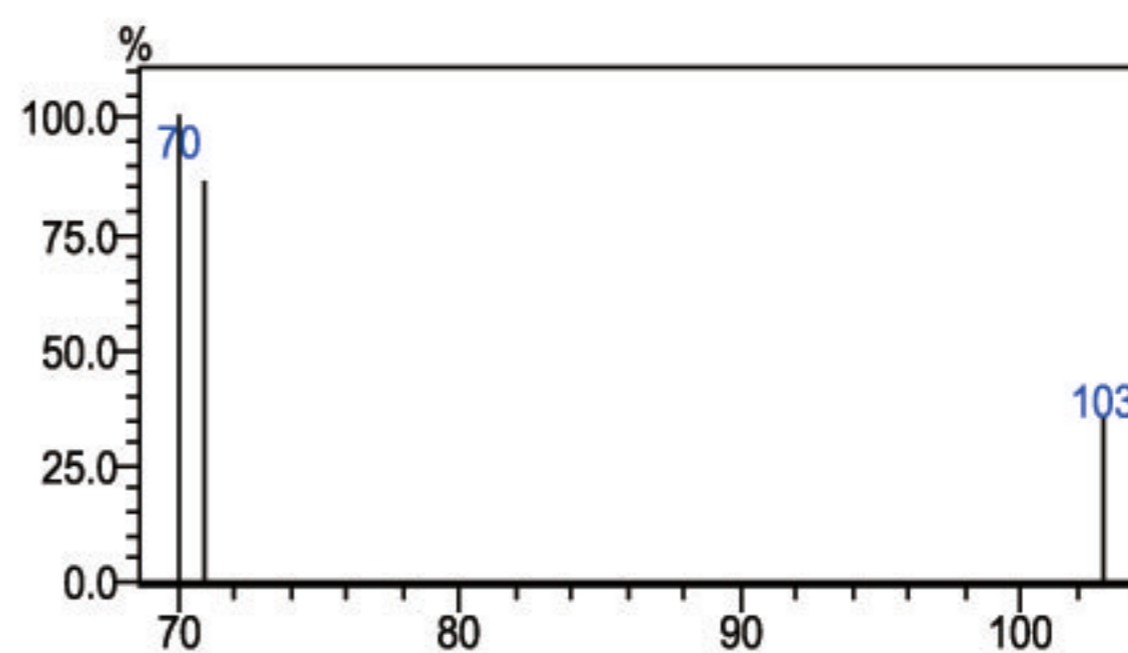


图6 沙蚕毒素质谱图 (sim)

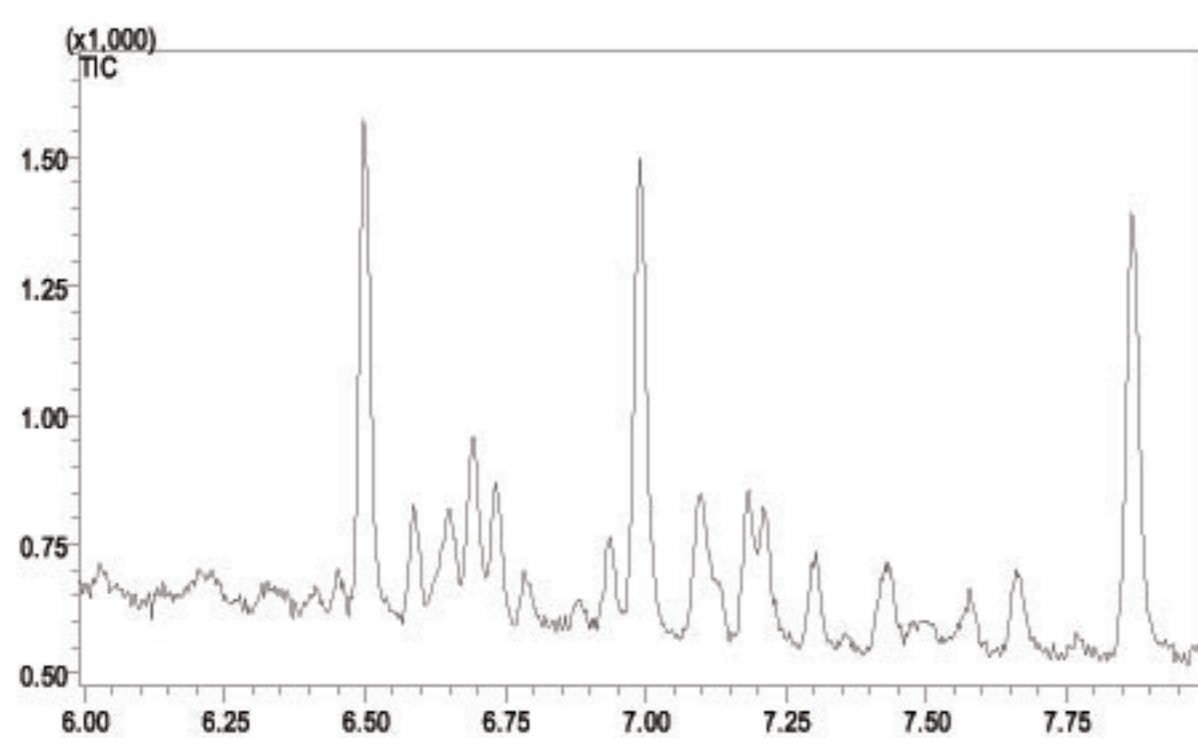


图7 样品总离子流图

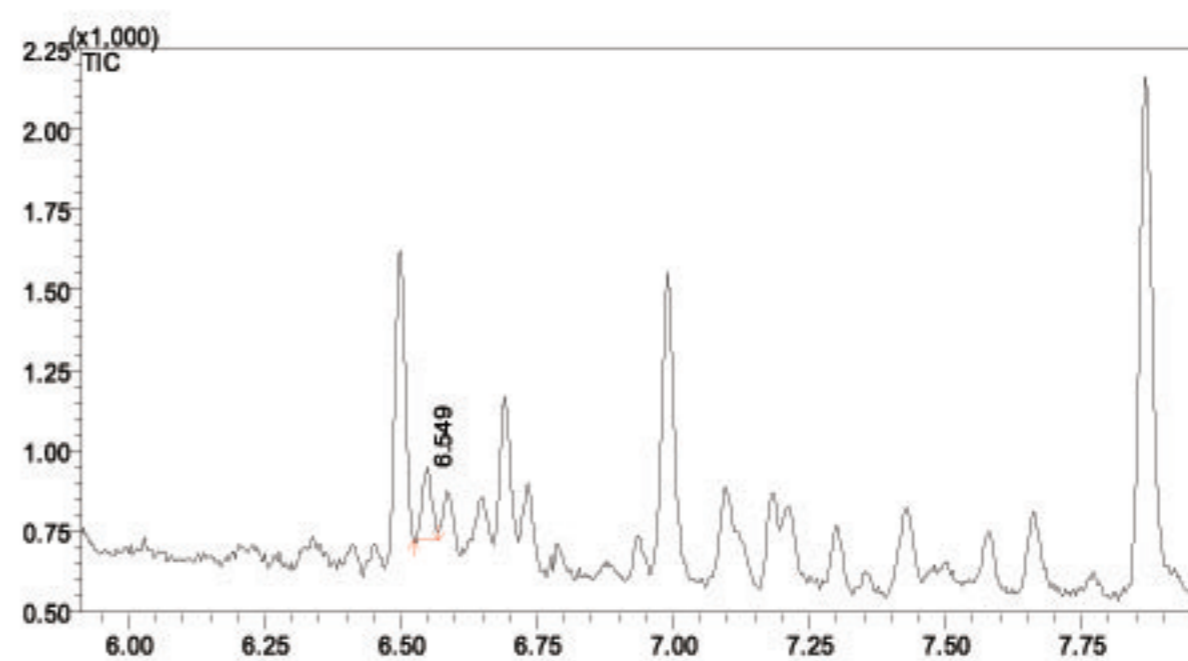


图8 样品添加总离子流图

## ■ 结果与讨论

本方法将GC-ECD方法扩展为GCMS-EI检测，仪器检出限为10ng/mL，方法检出限为1ng/mL，提高了灵敏度。方法重现性RSD值为4.11%。